

A

Oak Lawn Bulk Foods & Sunflower Bakery
at the Former Location of Hertzler Furniture & Solar
581 NW 1st Lane
(417) 279-2767 • Hours M-S • 8:00 am to 5:00pm



B

Sunny View Greenhouse
159 W. V Hwy
(417) 262-3695 • Hours M -S • 8:00 am to 5:00pm



C

Borntrager Vinyl Products
166 West Hwy V
(417) 884-5420 • Hours M-S • 8:00 am to 5:00pm



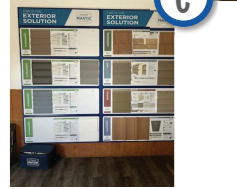
E

Rolling Acres Family Farms, LLC
726 NW 30th Lane
(417) 262-3334 • Hours M-S • 8:00 am to 5:00pm



F

Hershberger Supplies
669 NW 30th Lane
(417)884-5005 • Hours M-F • 8:00 am to 5:00pm



G

Bar B Leather Shop
305 NW 60th Road
(417) 262-1837 • Hours M-S • 8:00 am to 5:00pm



H

Triple "L" Tack Shop
340 NW 50th Road
(417) 682-1672 • Hours M-S • 8:00 am to 5:00pm



I

Countryside Greenhouse
585 NW 45th Road
(417) 681-0286 •Hours M-S • 8:00 am to 5:00pm



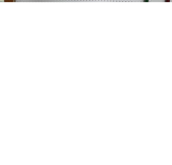
J

Country Lane Variety
660 NW 45th Lane
(417) 884-2080 • Hours M-W & F-S • 8:00 am to 5:00pm



K

Detweiler Farm
489 W Hwy V
(417) 843-6561 • Hours M-S • 8:00 am to 5:00pm



All Addresses are Lamar, MO 64759 • Closed Sundays



Homemade Chocolates
Bulk Food
Seasonings
Extracts & Flavorings
Bakery



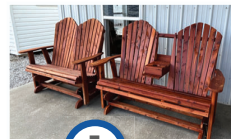
Custom Built Vinyl Windows
Vinyl Siding
Seamless Gutter
Fence



Railing & Decks
Canning Supplies
Home Grown Beef
Pork & Chicken
Farm Fresh Eggs
Greenhouse supplies
Planters



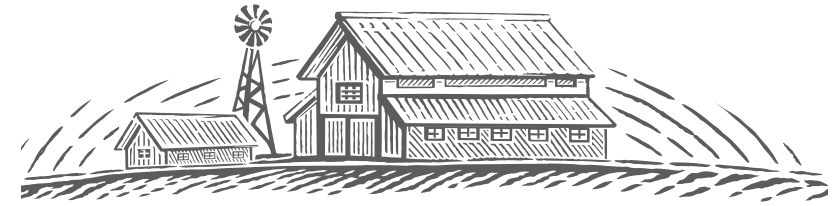
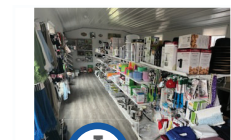
Hanging Baskets
Variety of fertilizers
Custom Leather Work
Livestock Feed
Saddle & Tack Repair



Saddles
Chaps
Holsters
Saddlebags
Plants, Planters
Outdoor Deco
Kitchen Ware
Gift Items



Fabrics
Sewing Notions
Fall Favorites
Pumpkins, Mums
& So Much More



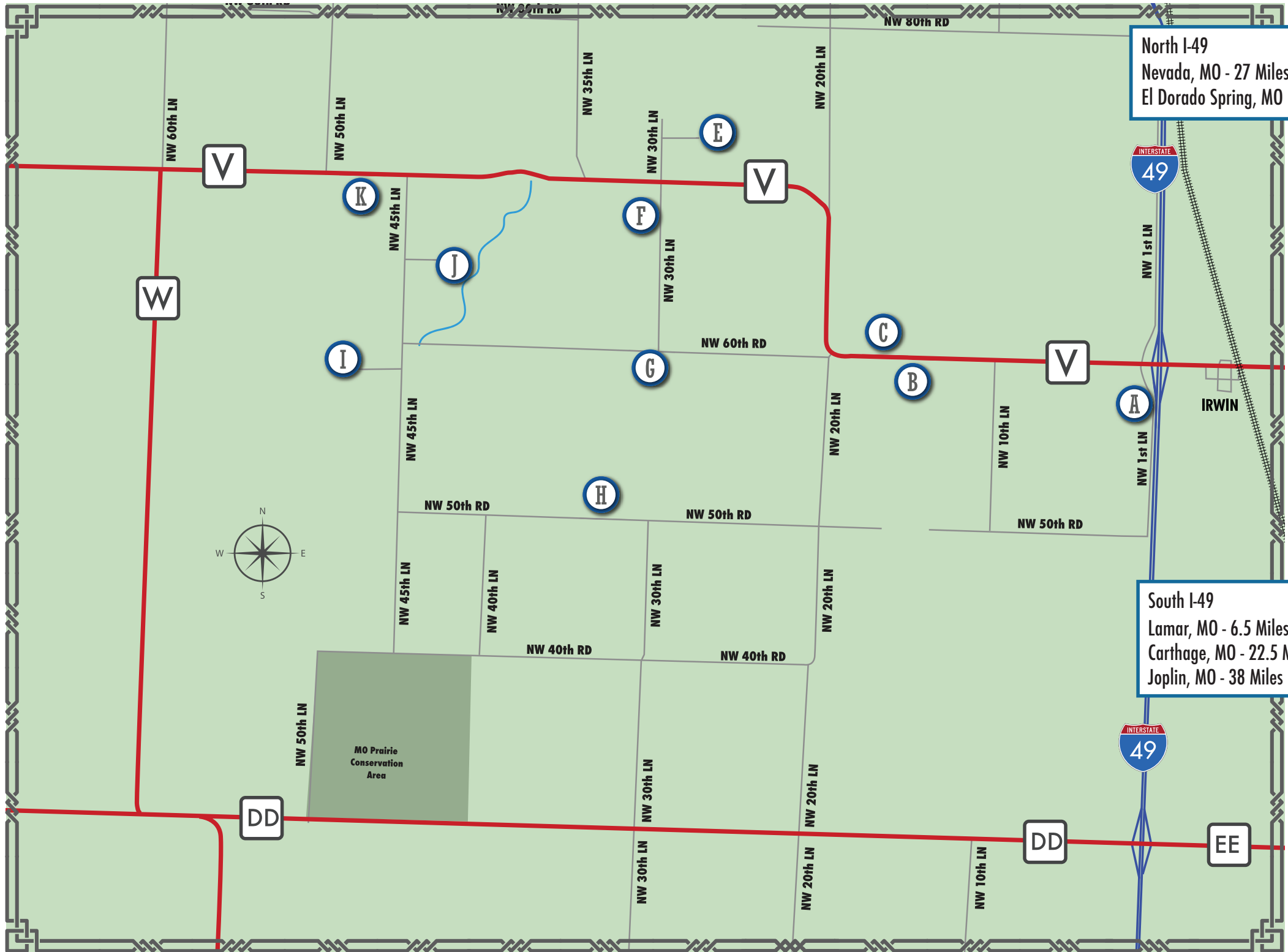
Amish Handmade & Homemade Goods

Checkout a few hidden gems of Barton County.

Take a journey back as you explore homemade, handcrafted, and unique items from skilled craftsmen.



More information can be found at www.bartoncounty.com, or call/visit the Chamber office at • 417-682-3595 • 110 W 10th St. Lamar, MO 64759



North I-49
 Nevada, MO - 27 Miles
 El Dorado Spring, MO - 43 Miles



South I-49
 Lamar, MO - 6.5 Miles
 Carthage, MO - 22.5 Miles
 Joplin, MO - 38 Miles

